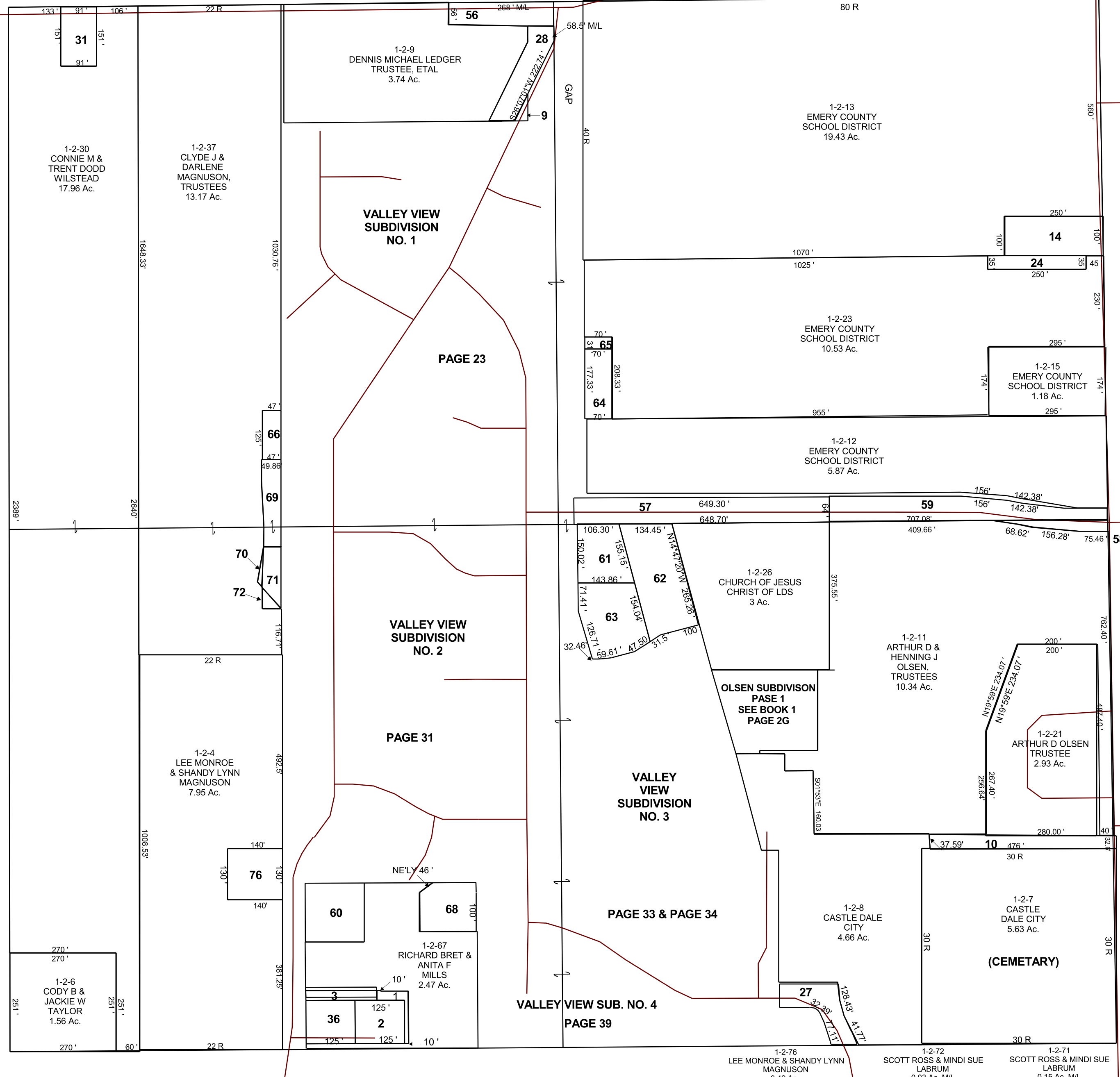


CASTLE DALE

SE/4 SECTION 28, T 18 S, R 08 E S.L.B. & M.

BOOK 1 PAGE 2
SCALE: 1" = 200'
MARCH 1, 2023

THIS PLAT IS MADE SOLELY FOR THE PURPOSE OF ASSISTING IN LOCATING THE LAND, AND THE RECORDER ASSUMES NO LIABILITY FOR VARIATIONS, IF ANY, WITH AN ACTUAL SURVEY.



- 1-2-1 EMERY COUNTY 0.069 Ac.
- 1-2-2 TINA & ROSS DANIEL ELLSWORTH 0.32 Ac.
- 1-2-3 EMERY COUNTY 0.1 Ac.
- 1-2-10 CASTLE DALE CITY 0.38 Ac.
- 1-2-14 CHURCH OF JESUS CHRIST OF LDS 0.57 Ac.
- 1-2-24 CHURCH OF JESUS CHRIST OF LDS 0.2 Ac.
- 1-2-27 CASTLE DALE CITY 0.34 Ac.
- 1-2-28 CASTLE DALE CITY 0.4 Ac.
- 1-2-31 CONNIE M & TRENT DODD WILSTEAD 0.32 Ac.
- 1-2-36 K & C GILBERT PROPERTIES 0.32 Ac.
- 1-2-56 STATE ROAD COMMISSION 0.38 Ac.
- 1-2-57 CHURCH OF JESUS CHRIST OF LDS 0.98 Ac.
- 1-2-58 CASTLE DALE CITY 0.13 Ac.
- 1-2-59 CASTLE DALE CITY 0.88 Ac.
- 1-2-60 RICHARD BRET & ANITA F MILLS 0.51 Ac.
- 1-2-61 BOWDI FARR & JULIE CAMILLE BARNETT, TRUSTEES 0.43 Ac.
- 1-2-62 KENT ROGER & CAROL LARSEN KEELE, TRUSTEES 0.85 Ac.
- 1-2-63 BRADLEY H & JANET B GILES 0.65 Ac.
- 1-2-64 JOEL S & SUSAN DORSCH 0.28 Ac.
- 1-2-65 GREG R & ANGELA J BARTON 0.05 Ac.
- 1-2-66 WADE B BOHN & DESTINI LEVERING 0.13 Ac.
- 1-2-68 RICHARD BRET & ANITA F MILLS 0.40 Ac.
- 1-2-69 DEVIN LESH 0.24 Ac. M/L
- 1-2-70 CLYDE J & DARLENE MAGNUSON 0.01 Ac. M/L

1-2
28-18S-08E