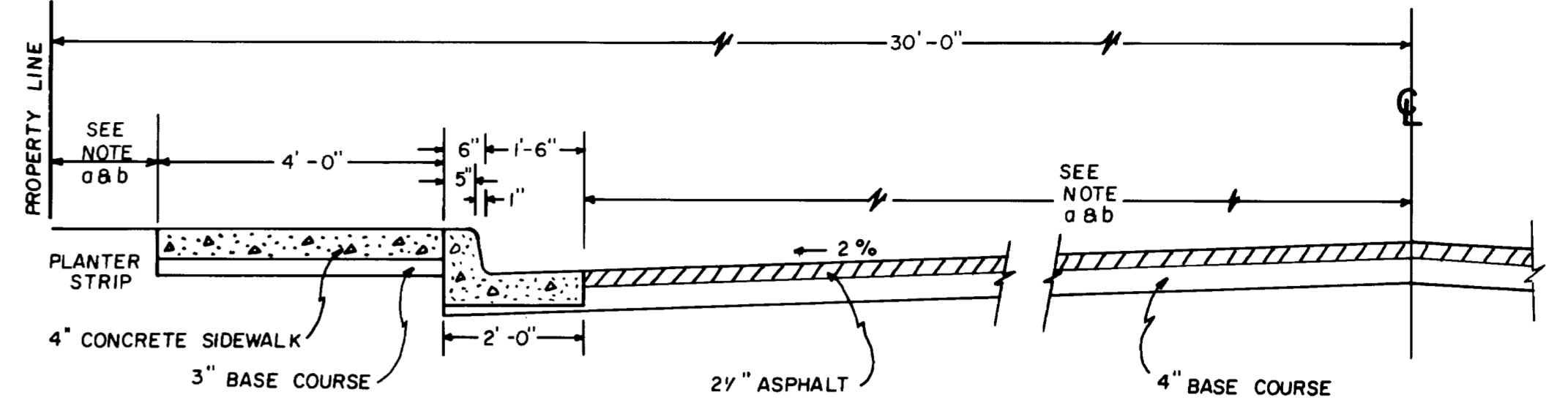


STATE OF UTAH
COUNTY OF EMERY
FILED AND RECORDED
APR 21 10 54 AM '80
IN BOOK PAGE
COUNTY RECORDER



TYPICAL ROAD SECTION

NOTE a : Bell Avenue and Valley View Drive require a 1'-6" planter strip and a 22'-6" roadway.
NOTE b : Orange Avenue, Orange Court, Bell Court, and Huntington Court require a 5'-6" planter strip and an 18'-6" roadway.

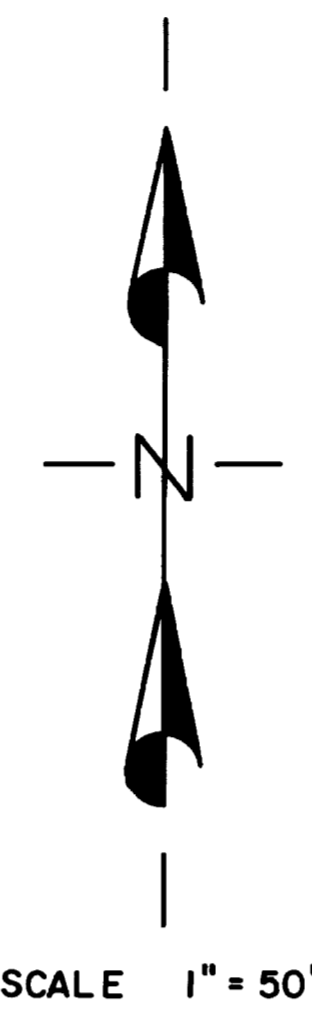
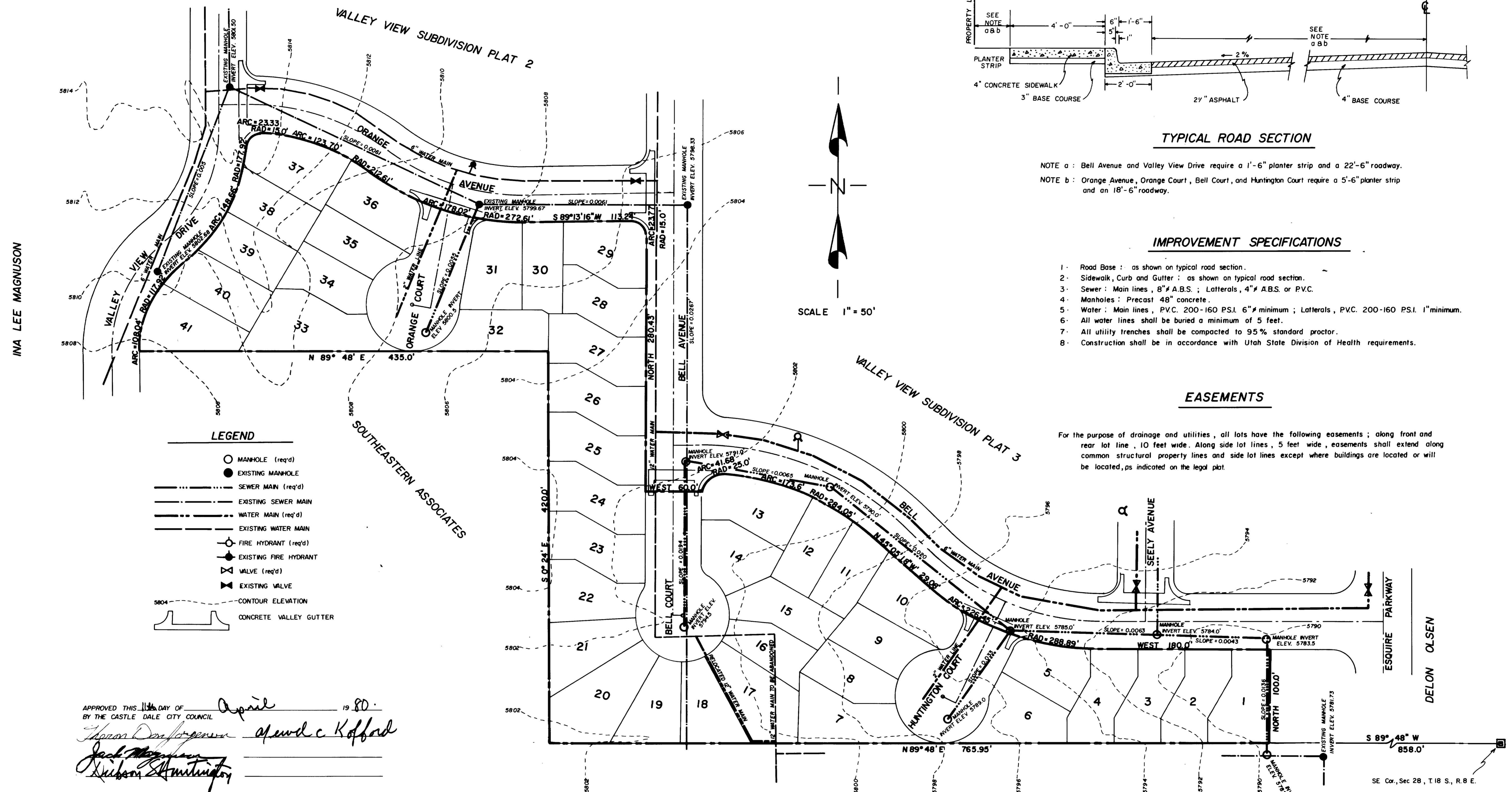
IMPROVEMENT SPECIFICATIONS

- 1. Road Base : as shown on typical road section.
- 2. Sidewalk, Curb and Gutter : as shown on typical road section.
- 3. Sewer : Main lines, 8" A.B.S. ; Laterals, 4" A.B.S. or P.V.C.
- 4. Manholes : Precast 48" concrete.
- 5. Water : Main lines, P.V.C. 200-160 P.S.I. 6" minimum ; Laterals, P.V.C. 200-160 P.S.I. 1" minimum.
- 6. All water lines shall be buried a minimum of 5 feet.
- 7. All utility trenches shall be compacted to 95% standard proctor.
- 8. Construction shall be in accordance with Utah State Division of Health requirements.

EASEMENTS

For the purpose of drainage and utilities, all lots have the following easements ; along front and rear lot line, 10 feet wide. Along side lot lines, 5 feet wide, easements shall extend along common structural property lines and side lot lines except where buildings are located or will be located, as indicated on the legal plat.

LEGEND
○ MANHOLE (req'd)
● EXISTING MANHOLE
--- SEWER MAIN (req'd)
--- EXISTING SEWER MAIN
--- WATER MAIN (req'd)
--- EXISTING WATER MAIN
○ FIRE HYDRANT (req'd)
● EXISTING FIRE HYDRANT
▽ VALVE (req'd)
▽ EXISTING VALVE
--- CONTOUR ELEVATION
--- CONCRETE VALLEY GUTTER



APPROVED THIS 14th DAY OF April 1980
BY THE CASTLE DALE CITY COUNCIL
Thomas D. Jensen Mayor
David C. Kofford Clerk
Jack Magnuson
Rubson Huntington

ATTEST
CLERK RECORDER
APPROVED THIS 8th DAY OF April 1980
BY THE CASTLE DALE CITY PLANNING COMMISSION
Christine Stucki Director
John D. Jensen Chairman

DATE: APRIL 1980
DESIGN: LMS
DRAWN: LMS SVK
SCALE: 1" = 50'

JOHANSEN & TUTTLE ENGINEERING INC.
CONSULTING ENGINEERS LAND SURVEYORS
CASTLE DALE, UTAH

VALLEY VIEW SUBDIVISION
(PLAT 4)
CASTLE DALE, EMERY COUNTY, UTAH

TERRACOR, UTAH
SALT LAKE CITY, UTAH

SHEET 1
SHEETS 1