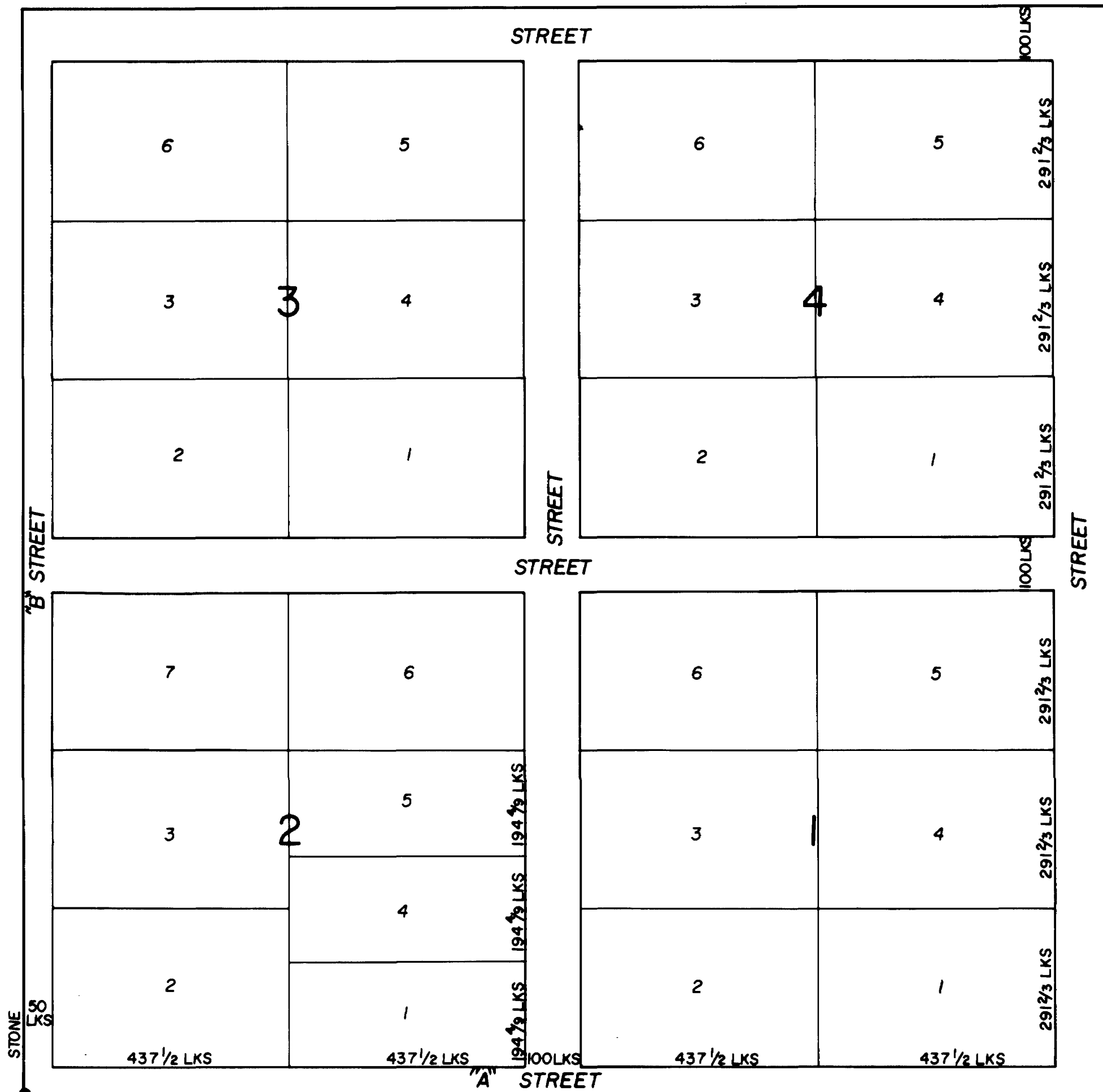


# MOLEN TOWNSITE

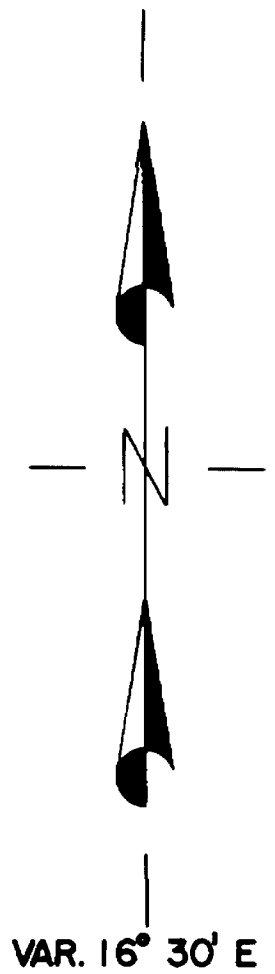
"A"

SURVEYED MAY 2<sup>nd</sup> 1892



SW Cor. of Sec. 7  
Tp. 20S, R8E.

SCALE 2 CHAINS TO ONE INCH



Know all men by these presents, that we Frederick A Killpack and Jane A. Killpack, husband and wife of Ferron, Emery County, Utah Territory, hereby certify and declare; that we are the sole owners of the land embraced in this plat; that the scale upon which this is drawn is two chains to one inch; that all lots therein shown have a frontage of 291 2/3 links, except lots 1, 4, and 5 in block 2 which has a frontage of 194 2/3 links and all lots have a dept as indicated viz: 437 1/2 links; that all streets thereon are 100 links wide except the streets named A and B streets which is 50 links wide; that all streets shown hereon are hereby dedicated to the use of the public forever; that this plat is hereby denominated Molen Townsite A.

In witness whereof we have hereunto set our hands this 9<sup>th</sup> day of May A.D. 1892

Signed in presence of,  
Carl Wilberg  
Carl E. Larsen

Frederick A. Killpack  
Jane A. Killpack

Territory of Utah ss  
County of Emery

On this 9<sup>th</sup> day of May A.D. 1892, personally appeared before me Frederick A. Killpack and Jane A. Killpack, the signers of the above instrument, who duly acknowledged to me that they executed the same.

SEAL  
Carl Wilberg  
County Clerk of  
Emery County, Utah

I, George Fox, surveyor of Emery County, hereby certify that the above plat, embracing the following described land: beginning at the SW cor. of Sec. 7, T20S, R8E, run E 20 ch; thence N 20 chs; thence W 20 chs; thence S 20 chs. to the place of beginning, was by me surveyed at the insistance of Frederick A. Killpack and Jane A. Killpack the owners thereof and that the same is correct.  
Dated May 2<sup>nd</sup> 1892  
George Fox  
County Surveyor

Approved May, 9<sup>th</sup> A.D. 1892.  
Jasper Robertson  
Probate Judge of  
Emery County, Utah

Attest:  
Carl Wilberg  
Clerk of the Probate Judge SEAL

Filed for record and recorded May 9<sup>th</sup> 1892.  
Carl Wilberg  
Entry No. 1662 County Recorder of  
Emery County, Utah

Traced by svk  
Johanson & Tuttle  
9-75