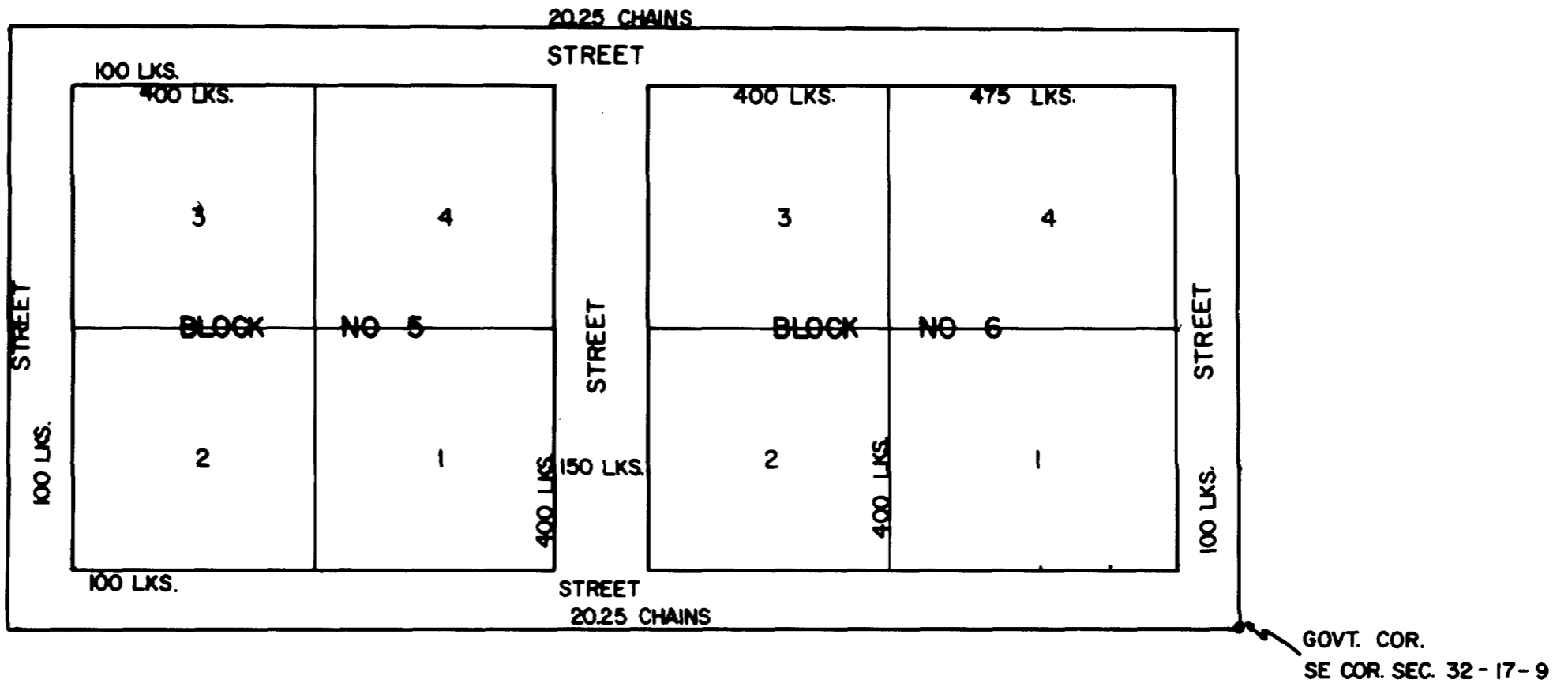


# LAWRENCE TOWN PLAT "B"



Scale 32 inches to 1 mile. Sec. 32 Tp 17S Range 9E Salt Lake Meridian

I hereby certify that the above plat correctly represents a survey made by me, July 7<sup>th</sup>, 1893, of the Lawrence Townsite Survey, Emery County Utah. Castle Dale 2-21-94 W. J. Tidwell County Surveyor

Know all men by these presents, that we Henry Roper and Anna S. Roper husband and wife, residents of Lawrence Town and Precinct in the County of Emery and Territory of Utah, hereby certify and declare that we are the sole owners of the lands embraced in this plat. That the lots therein shown as indicated by chains and links in the above plat. That all streets herein shown are hereby set apart for and dedicated to the use of the public forever. That this plat is hereby denominated plat "B" Lawrence Townsite Survey in Lawrence Precinct Emery County Utah Territory. In witness whereof we have hereunto set our hands at Castle Dale Emery County Utah Territory this 5<sup>th</sup>, day of April 1894.

Henry Roper  
Amy S. Roper

Territory of Utah ss  
County of Emery

On this 5<sup>th</sup> day of April 1894, personally appeared before me Henry Roper and Amy S. Roper husband and wife who acknowledged to me that they and each of them executed the within instrument.

Seal C.E. Kofford  
Notary Public in and for  
Emery County, Utah Territory  
My commission expires September the 12<sup>th</sup>, 1894

Approved May 24<sup>th</sup>, 1894.  
Herbert Savage Seal  
Probate Judge of Emery County

Entry No. 2561

Filed for record and recorded December 18<sup>th</sup> 1894 at 4 P.M.  
Carl Wilberg  
County Recorder  
Emery County Utah

Traced by svk  
Johansen & Tuttle  
9-75

VAR 16° 15' E

