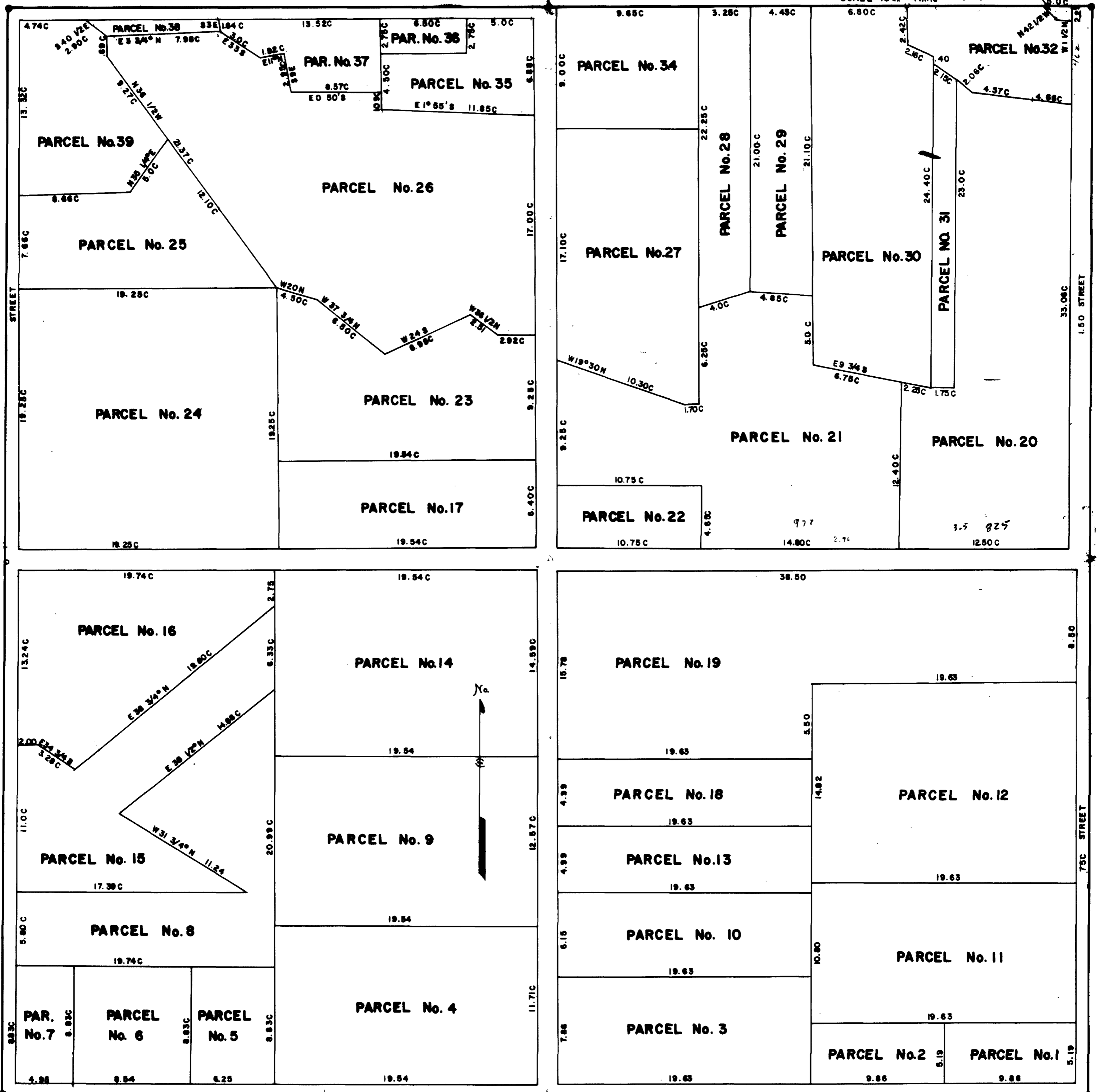


FERRON PLOT "B"

PARCEL No. 33
SCALE 16 in. = 1 mile
1:330
528'



SEC. COR

SEC. COR

APPROVED OCT. 27, 1894

(Signed) HERBERT SAVAGE
PROBATE JUDGE
OF EMERY COUNTY, UTAH

I hereby certify that the above plat correctly
represents a survey made by me of plot "B"
Ferron Townsite Nov. 15th 1893

Castle Dale 11-15-93
(Signed) WJ TIDWELL, Co. Surveyor

This tracing was made by Johansen & Tuttle Engineering, Inc.,
Castle Dale, Utah, on Mar. 10, 1975 from a tracing of the
original which was made on Dec. 6, 1913 by Ira R. Browning,
County Surveyor.