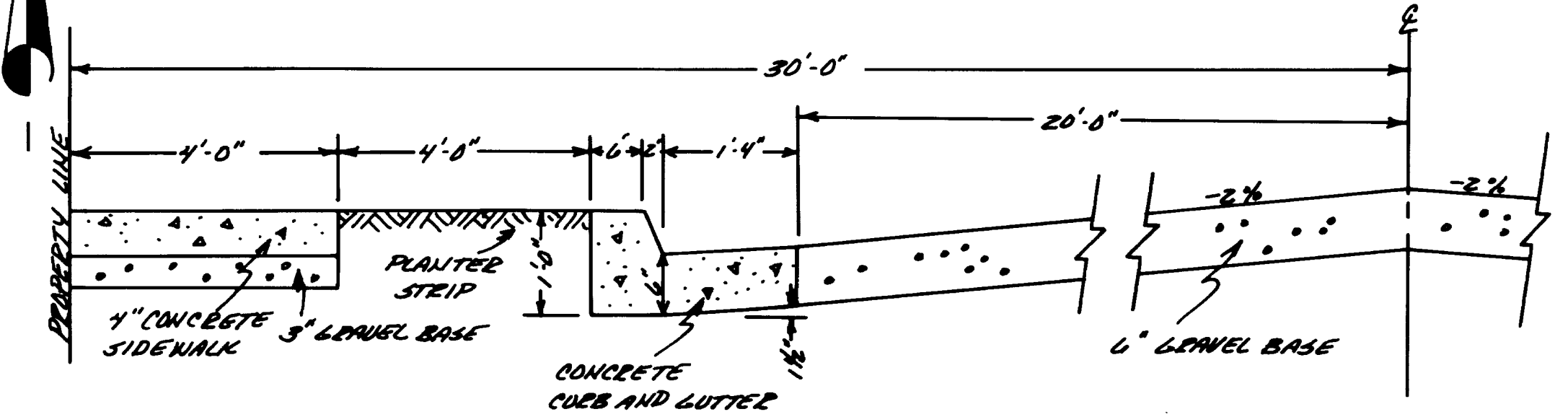
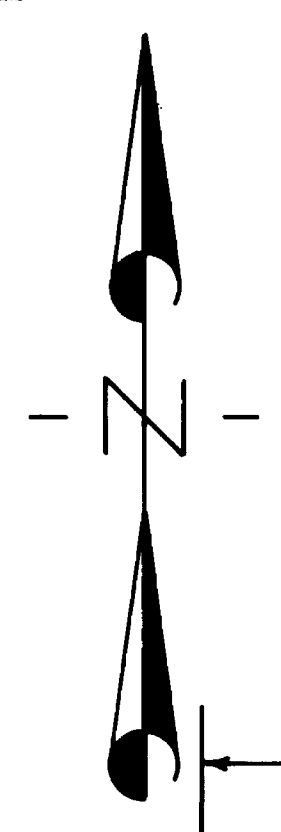


TEST PIT # 1	TEST PIT # 2	TEST PIT # 3	TEST PIT # 4
5782	5782	5782	5782
5784	5784	5784	5784
5786	5786	5786	5786
5788	5788	5788	5788
5790	5790	5790	5790
5792	5792	5792	5792
5794	5794	5794	5794
5796	5796	5796	5796
5798	5798	5798	5798
5800	5800	5800	5800

STATE OF UTAH  
 COUNTY OF EMERY  
 FILED AND RECORDED  
 May 25 2 30 PM '82  
 A BORN PAGE  
 COUNTY RECORDER

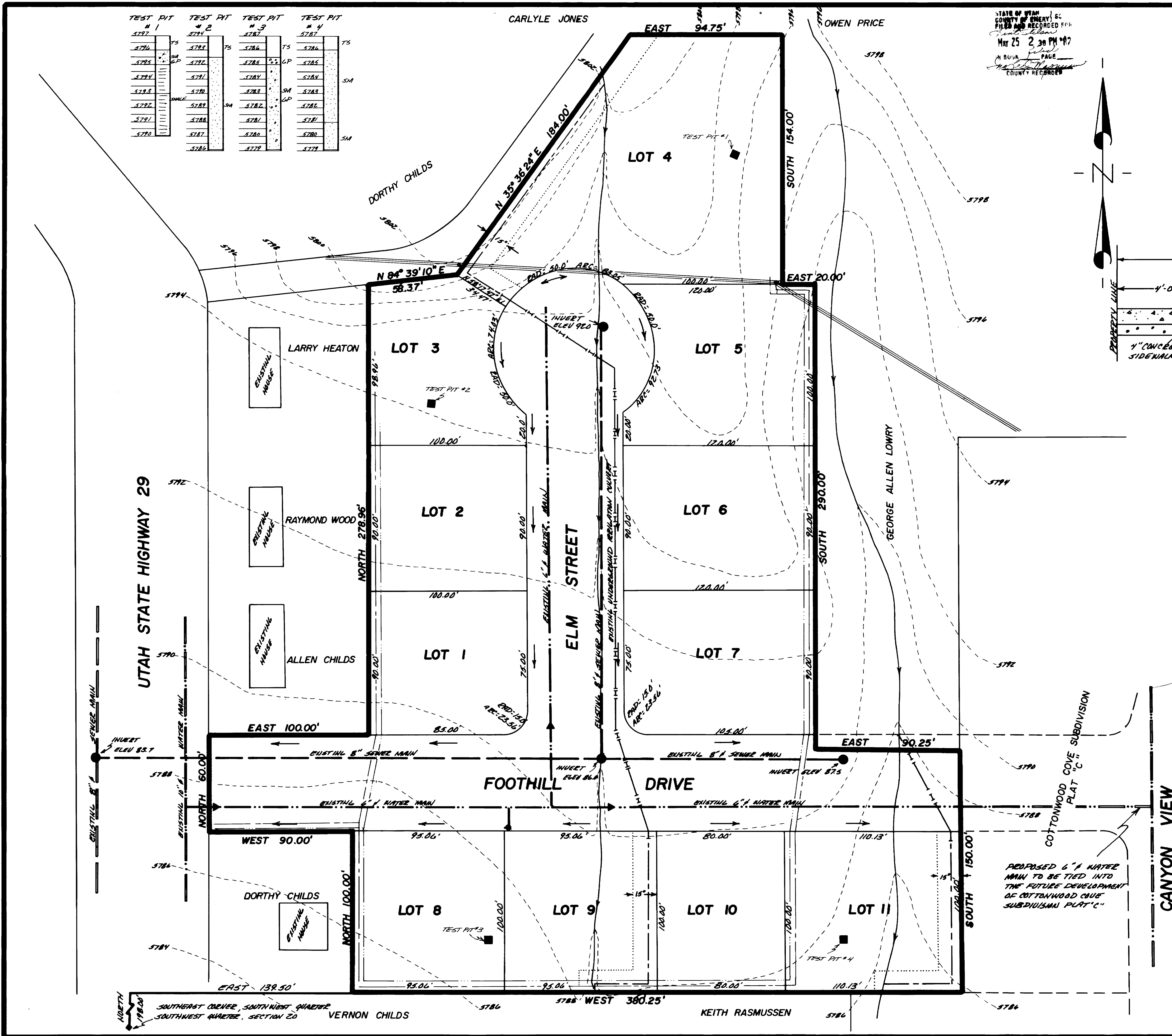
APPROVED THIS \_\_\_\_\_ DAY OF \_\_\_\_\_ A.D. 19 \_\_\_\_\_  
 BY THE ORANGEVILLE CITY COUNCIL.  
 \_\_\_\_\_  
 \_\_\_\_\_  
 \_\_\_\_\_  
 ATTEST \_\_\_\_\_  
 CLERK-RECORDER  
 APPROVED THIS \_\_\_\_\_ DAY OF \_\_\_\_\_ A.D. 19 \_\_\_\_\_  
 BY THE ORANGEVILLE CITY PLANNING COMMISSION  
 \_\_\_\_\_  
 DIRECTOR-SECRETARY      CHAIRMAN-PLANNING COMMISSION



TYPICAL STREET CROSS SECTION

- LEGEND**
- EXISTING 8" SEWER LINE
  - EXISTING MANHOLE
  - EXISTING WATER MAIN
  - ▶ EXISTING GATE VALVE
  - ▶ EXISTING FIRE HYDRANT
  - SUBDIVISION PROPERTY BOUNDARY
  - DITCH OR WASH
  - EXISTING 15" CMP IRRIGATION PIPE
  - EASEMENT FOR UTILITIES AND DRAINAGE
  - RELOCATED IRRIGATION DITCH OR WASH
  - CONTOUR ELEVATION ABOVE SEA LEVEL
  - DRAINAGE FLOW
  - OVERHEAD POWER LINE
  - UNDERGROUND TELEPHONE LINE
  - UNDERGROUND POWER LINE

- EASEMENT**
- NOTE: FOR THE PURPOSE OF DRAINAGE AND UTILITIES ALL LOTS HAVE THE FOLLOWING EASEMENTS
1. ALONG FRONT AND REAR LOT LINES, 10.0' WIDE
  2. ALONG ALL SIDE LOT LINES, 5.0' WIDE



DATE: MAY - 1982  
 DESIGN: HRT  
 DRAWN: SVK  
 SCALE: 1" = 30'

**JOHANSEN & TUTTLE ENGINEERING INC.**  
 CONSULTING ENGINEERS      LAND SURVEYORS  
 CASTLE DALE, UTAH

**FOOTHILL SUBDIVISION**  
 AMENDMENT No. 1  
 ORANGEVILLE CITY, EMERY COUNTY, UTAH

**KENT STILSON**  
 ORANGEVILLE, UTAH

SHEET  
 1 / 1  
 SHEETS