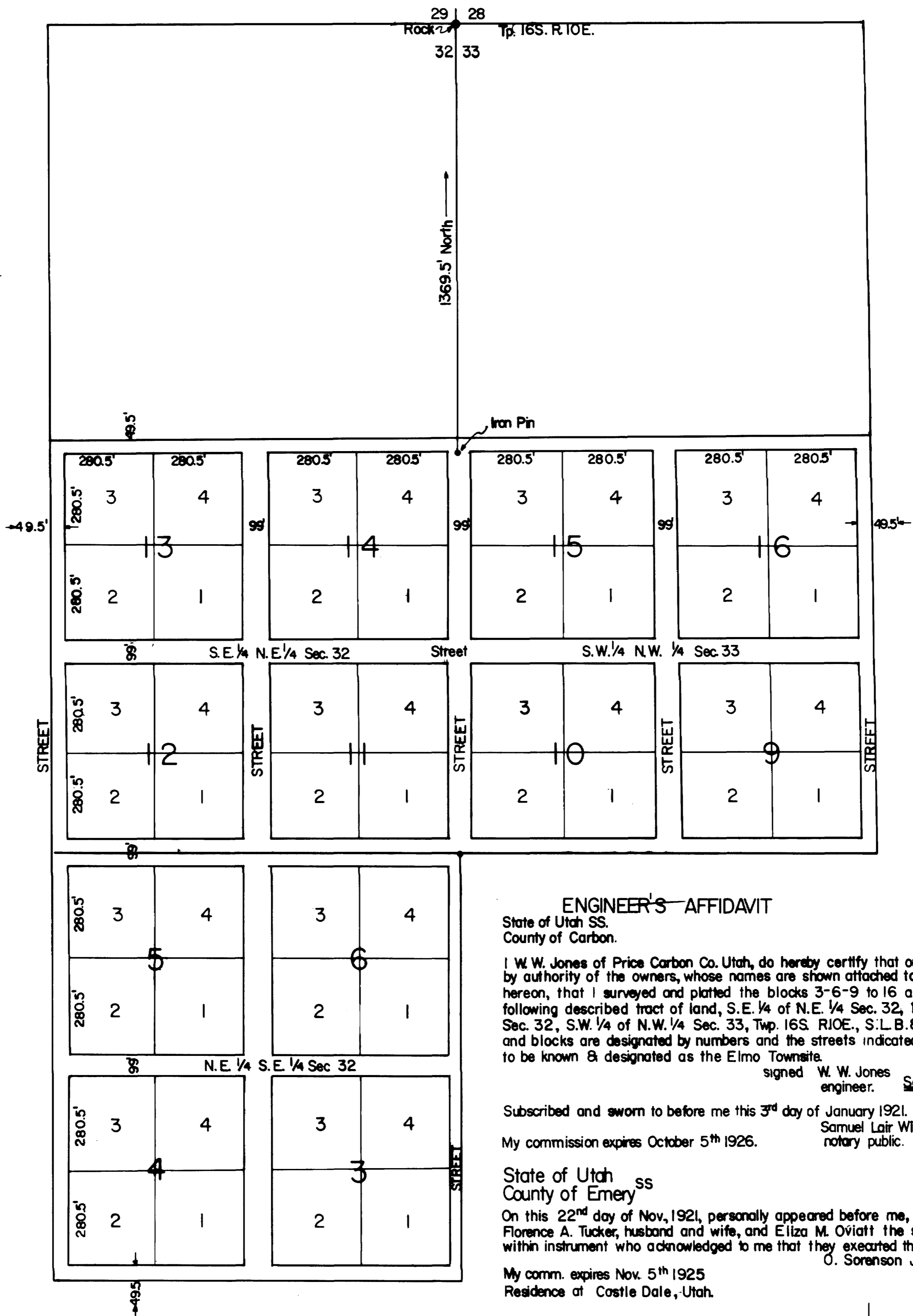


# PLAT OF THE TOWNSITE OF ELMO



## ENGINEER'S AFFIDAVIT

State of Utah ss.  
County of Carbon.

I W. W. Jones of Price Carbon Co. Utah, do hereby certify that on Dec. 31<sup>st</sup> 1920, by authority of the owners, whose names are shown attached to the dedication hereon, that I surveyed and platted the blocks 3-6-9 to 16 and lots shown on following described tract of land, S.E. 1/4 of N.E. 1/4 Sec. 32, N.E. 1/4 of S.E. 1/4 Sec. 32, S.W. 1/4 of N.W. 1/4 Sec. 33, Twp. 16S. R10E., S.L.B. & M., that the lots and blocks are designated by numbers and the streets indicated, that this plat is to be known & designated as the Elmo Townsite.

signed W. W. Jones  
engineer. Seal

Subscribed and sworn to before me this 3<sup>rd</sup> day of January 1921.

My commission expires October 5<sup>th</sup> 1926.

Samuel Lair Williams,  
notary public.

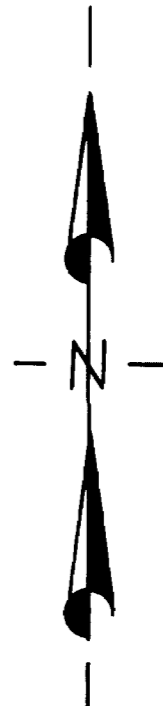
State of Utah ss.  
County of Emery

On this 22<sup>nd</sup> day of Nov, 1921, personally appeared before me, Worth Tucker and Florence A. Tucker, husband and wife, and Eliza M. Oviatt the signers of the within instrument who acknowledged to me that they executed the same.

O. Sorenson Jr. Seal

My comm. expires Nov. 5<sup>th</sup> 1925  
Residence at Castle Dale, Utah.

Entry No. 39300  
Recorded at request of  
Worth Tucker  
March 11, 1921 at 5 P.M.  
in book A of Town Plats  
Page 91  
Annie M. Allen  
County Recorder  
Emery County, Utah  
traced by svk  
Johansen & Tuttle  
7-75



## ELMO TOWNSITE

Scale 1" = 500'  
W. W. Jones Dec. 31, 1920.

### OWNERS CERTIFICATE

State of Utah ss.  
County of Emery

We the undersigned owners of the land described as follows to-wit: S.E. 1/4 of N.E. 1/4 Sec 32, N.E. 1/4 of S.E. 1/4 Sec 32 and S.W. 1/4 of N.W. 1/4 Sec. 33 Tps. 16S. R10E. S.L.B. & M. do hereby dedicate to the use of the public a perpetual easement and right of way over all streets shown hereon by this plat, and we certify that this plat was named, made, and designated by our authority.

Subscribed and sworn to before me this day of 1921 signed Florence A. Tucker, Worth Tucker, Eliza M. Oviatt.

This plat is hereby approved by the board of county commissioners of Emery County this 7<sup>th</sup> day of March 1921.

signed D. Heber Leonard, E. E. Adams, Wm Hitchcock  
Commissioners,