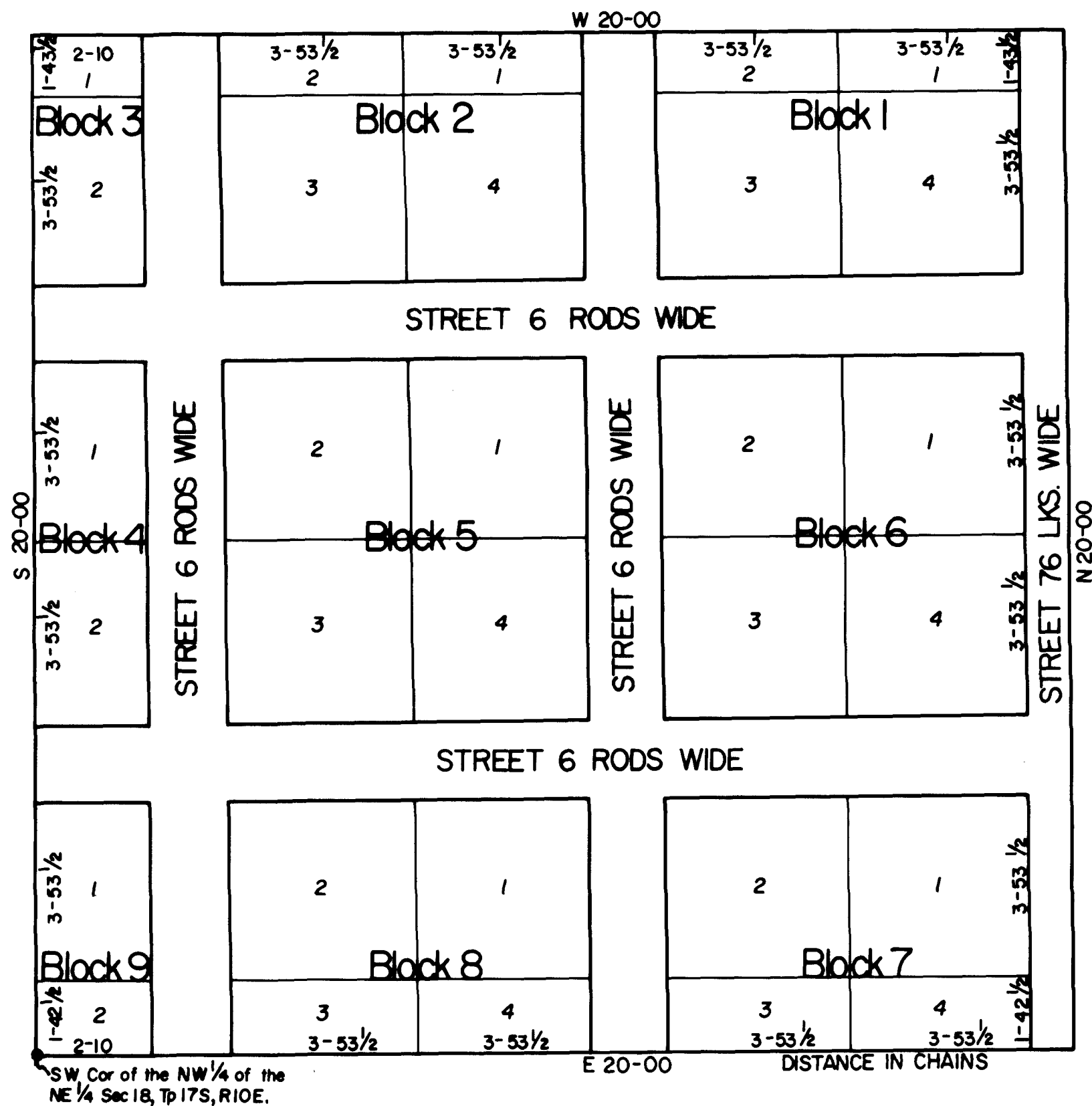


# CRAMER'S SUBDIVISION

## CLEVELAND TOWNSITE

EMERY COUNTY, UTAH



Know all men by these presents that we Anton Cramer and Matilda Cramer, husband and wife, of Cleveland, Emery County, State of Utah, hereby certify and declare that we are sole owners of the lands embraced in this plat; that the scale upon which this plat is drawn is  $2\frac{1}{3}$  chains to the inch; that the lots therein shown are 14 rods 2 feet by 14 rods 2 feet; that all streets and avenues shown hereon are six rods wide; that all streets and avenues shown hereon are hereby dedicated to the use of the public forever; that this plat is hereby denominated Cramer's Subdivision Cleveland Townsite, Emery County, Utah. In witness whereof we have hereunto set our hands this 4<sup>th</sup> day of January A.D. 1905.

Signed in the presence of  
James McDaniel  
Lewis Larson

Anton Cramer  
Matilda Cramer

State of Utah ss  
County of Emery

On this 4<sup>th</sup> day of January 1905 personally appeared before me Anton Cramer and Matilda Cramer the signers of the above instrument who duly acknowledged to me that they executed the same.

My commission expires  
January 3<sup>rd</sup> 1907.

seal  
Lewis Larson  
Notary Public

I, George Fox surveyor of Emery County, hereby certify that the above plat embracing the following described land in Emery County Utah to wit:

Beginning at the South West corner of the North West  $\frac{1}{4}$  of the North East  $\frac{1}{4}$  of Section 18, Township 17S, Range 10E; thence East 20 chains; thence North 20 chains; thence West 20 chains; thence South 20 chains to place of beginning, was by me surveyed and that the same is correct

George Fox

Approved February 6<sup>th</sup> 1905

A. N. Leonard  
County Clerk

E. H. Fox Jr.  
Deputy

seal

Entry No. 13740

Filed for record at the request of Anton Cramer, September 25<sup>th</sup> 1905, at 40 minutes past 4 o'clock PM. And recorded in book A of town plats page 47.

Records of Emery County, State of Utah.

O. Sorenson Jr.  
Recorder of said county

Traced by svk  
Johansen & Tuttle  
9-75