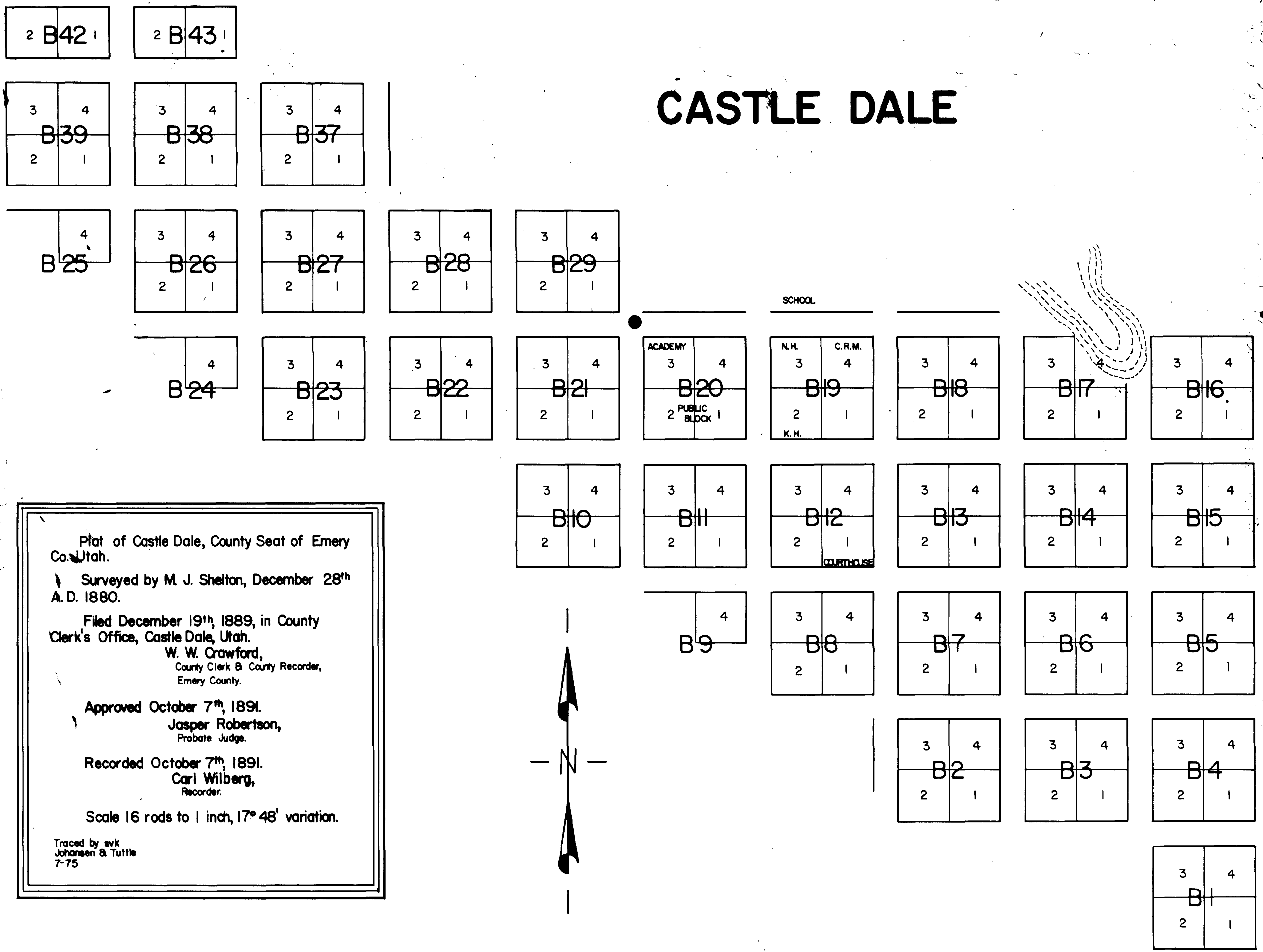


CASTLE DALE



Plat of Castle Dale, County Seat of Emery Co. Utah.

Surveyed by M. J. Shelton, December 28th A. D. 1880.

Filed December 19th, 1889, in County Clerk's Office, Castle Dale, Utah.

W. W. Crawford,
County Clerk & County Recorder,
Emery County.

Approved October 7th, 1891.
Jasper Robertson,
Probate Judge.

Recorded October 7th, 1891.
Carl Wilberg,
Recorder.

Scale 16 rods to 1 inch, 17° 48' variation.

Traced by svk
Johansen & Tuttle
7-75

Center of Sec. 34
Tp. 18S 8E.

S. E. Cor. S. W. 1/4 Sec. 34
T. 18S, R. 8E.