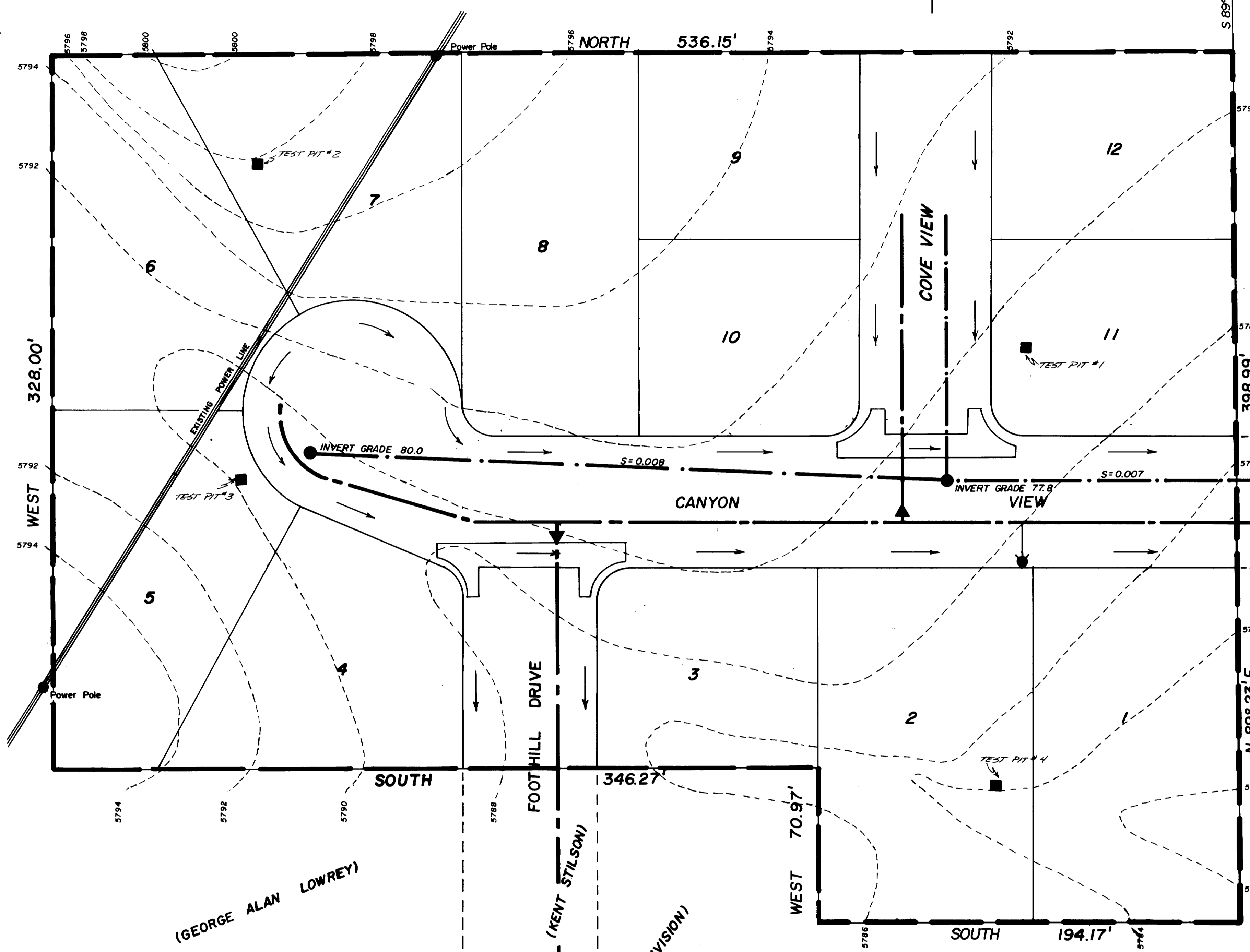
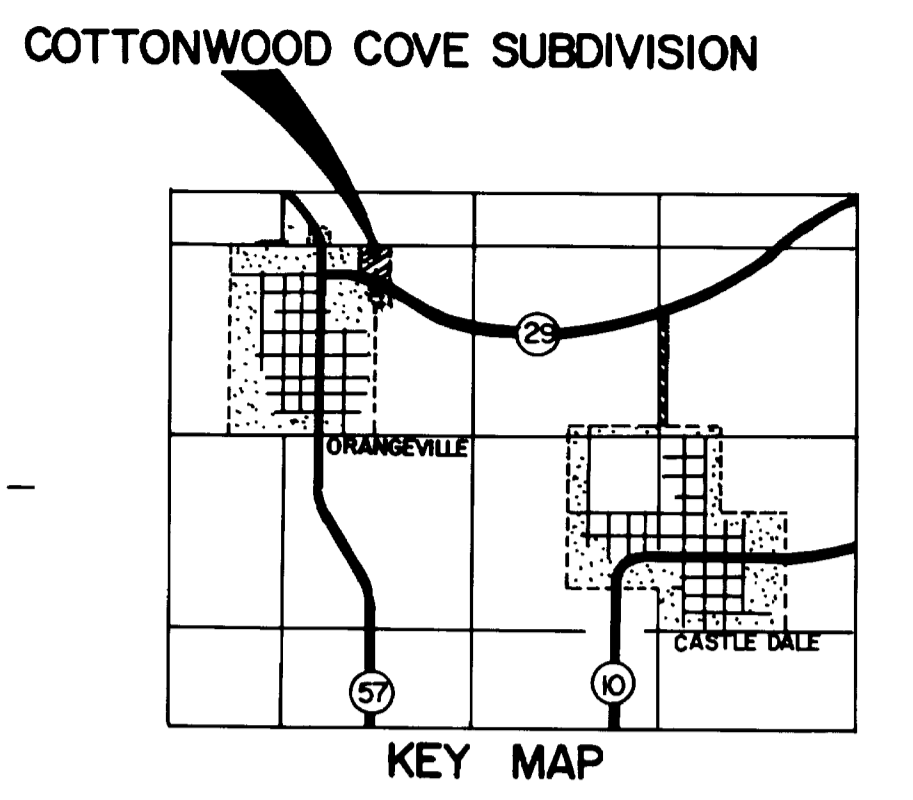


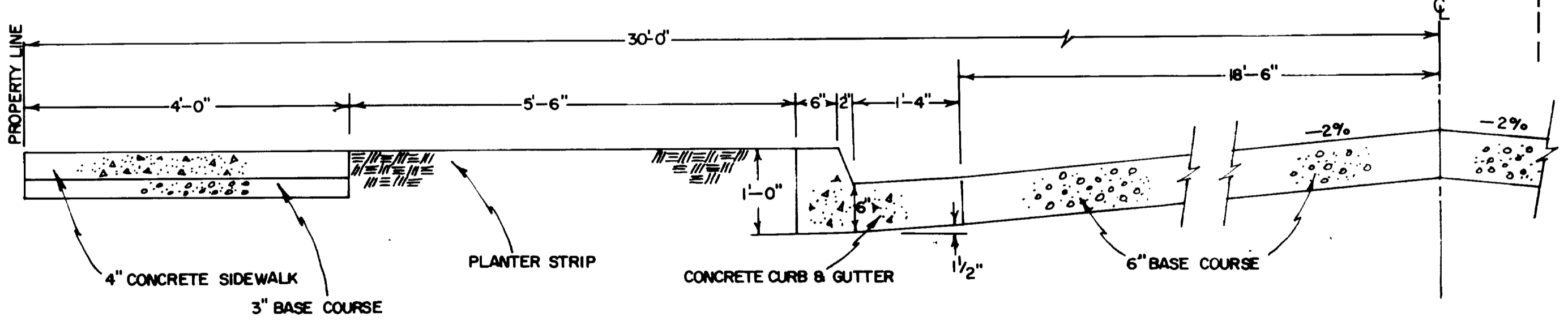
SOUTHWEST CORNER OF THE SOUTHWEST 1/4 OF THE SOUTHWEST 1/4 OF SECTION 20, TOWNSHIP 18 SOUTH, RANGE 8 EAST, SLB8M

TEST PIT #1	TEST PIT #2	TEST PIT #3	TEST PIT #4
5781	5786	5780	5781
5786	5787	5782	5782
5787	5784	5788	5782
5786	5782	5787	5781
5782	5784	5784	5780
5784	5782	5785	5778
5783	5782	5784	5778
5782	5781	5783	5777
5781	5780	5782	5776
5780	5781		



EASEMENTS
 FOR THE PURPOSE OF DRAINAGE AND UTILITIES,
 ALL LOTS HAVE THE FOLLOWING EASEMENTS:
 1. ALONG FRONT AND REAR LOT LINE—
 10.0' WIDE.
 2. ALONGSIDE LOT LINE—5.0' WIDE.

- LEGEND**
- PROPERTY LINE
 - 8" SEWER LINE (TO BE INSTALLED)
 - 6" WATER LINE (TO BE INSTALLED)
 - MANHOLE
 - FIRE HYDRANT
 - ▲ WATER VALVE
 - - - CONTOUR LINES
 - CONCRETE VALLEY GUTTERS
 - DRAINAGE FLOW



TYPICAL CROSS SECTION OF STREET
 SCALE 3/4" = 1'-0"

APPROVED THIS 9th DAY OF July AD 1982 BY THE
 ORANGEVILLE CITY COUNCIL.
Tom Thompson
Mark Van Buren

APPROVED THIS 22nd DAY OF February A. D. 1980, BY THE ORANGEVILLE
 CITY PLANNING COMMISSION.
Caroline Brady DIRECTOR-SECRETARY
D. K. Keiser CHAIRMAN, PLANNING COMMISSION

ATTEST *Marilyn Brown*
 CLERK-RECORDER

DATE: FEB. 80
 DESIGN: HRT
 DRAWN: KAS SVK
 SCALE: 1" = 30'

JOHANSEN & TUTTLE ENGINEERING INC.
 CONSULTING ENGINEERS LAND SURVEYORS
 CASTLE DALE, UTAH

COTTONWOOD COVE SUBDIVISION
 PLAT "C"
 ORANGEVILLE CITY, EMERY COUNTY, UTAH

KENT STILSON
 ORANGEVILLE CITY, UTAH

SHEET 1
 SHEETS 1